



# GAT MONTHLY MEMBERSHIP PROGRESS REPORT

Results as of: 1/31/2023

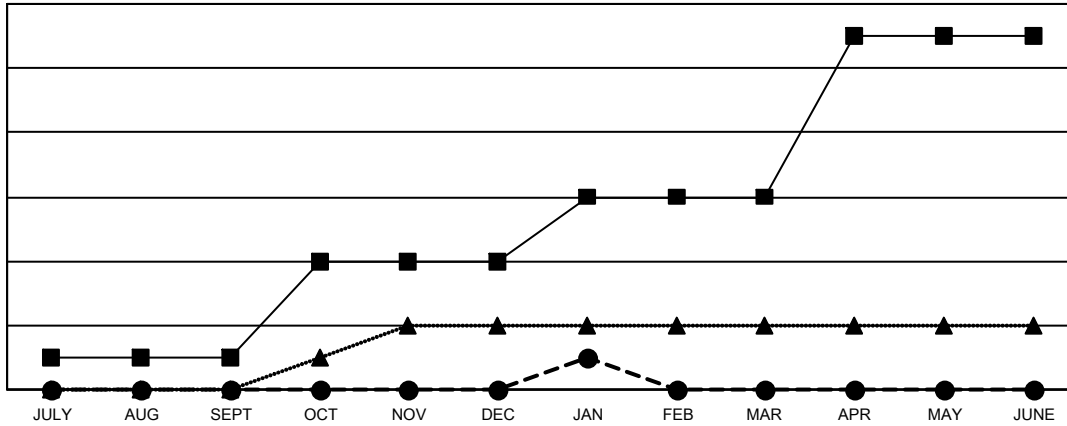
Multiple District 105

LOCATION: ENGLAND

Clubs			
RESULTS FOR 2022-2023			
QUARTER	NEW CLUB GOAL	NEW CLUBS	DROPPED CLUBS
JULY/AUG/SEPT	1	0	6
OCT/NOV/DEC	3	0	3
JAN/FEB/MAR	2	1	3
APR/MAY/JUNE	5	0	0

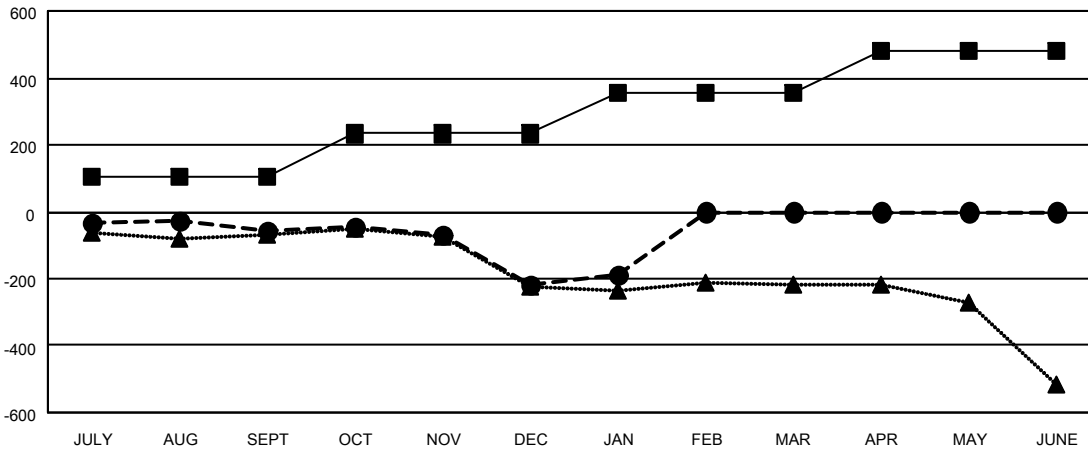
Members			
RESULTS FOR 2022-2023			
QUARTER	MEMBER GROWTH NET GOAL	MEMBER GROWTH ACTUAL	DROPPED MEMBERS ACTUAL (including transfers)
JULY/AUG/SEPT	104	244	269
OCT/NOV/DEC	129	256	381
JAN/FEB/MAR	122	149	97
APR/MAY/JUNE	127	0	0

GOALS AND ACTUAL NEW CLUBS CUMULATIVE



- CURRENT YEAR GOALS FOR NEW CLUBS
- CURRENT YEAR ACTUAL NEW CLUBS
- ▲- LAST YEAR ACTUAL NEW CLUBS

GOALS AND ACTUAL MEMBERS CUMULATIVE



- MEMBER GROWTH NET GOAL
- MEMBER GROWTH ACTUAL
- ▲- LAST YEAR MEMBERSHIP ACTUAL

DROPPED CLUBS: 12	
<b>DROPPED MEMBERS</b>	
DECEASED	112
CLUB CANCELLED	0
OTHER	635
<b>TOTAL</b>	<b>747</b>

240 CLUBS OF 575 ADDED 1 OR MORE NEW MEMBERS

[CLICK HERE FOR CUMULATIVE MEMBERSHIP DATA](#)

GENDER DISTRIBUTION	
MALE	6,861 (69.84%)
FEMALE	2,962 (30.15%)
NON BINARY	1 (0.01%)
PREFER NOT TO ANSWER	0 (0.00%)
<b>TOTAL FAMILY UNIT MEMBERS</b>	<b>1,355</b>
<b>FAMILY MEMBERS PAYING HALF DUES</b>	<b>689</b>